

CORPORATE PROFILE

Sumitomo Heavy Industries Gearbox Co., Ltd.

HP: <https://www.shigearbox.com>

Headquarter:

16-1, Wakihama 4-chome, Kaizuka-shi, Osaka 597-8555, Japan
Tel. (81)72-431-3021 Fax. (81)72-431-0846

International operations:

3-33, Nakanoshima 2-chome, Kita-ku, Osaka-shi, Osaka 530-0005, Japan
Tel. (81)6-7635-3662 Fax. (81)6-7711-5121

From active sales to reliable after-sales care
Sumitomo Heavy Industries PTC Group World Service Network

[Americas]

Sumitomo Machinery Corporation of America (SMA)
4200 Holland Blvd. Chesapeake, VA 23323, U.S.A.
Tel. (1)757-485-3355 Fax. (1)757-485-7490

[Europe]

Sumitomo (SHI) Cyclo Drive Germany GmbH(SCG)
Cyclostraße 92, 85229 Markt Indersdorf, Germany
Tel. (49)8136-66-0 Fax. (49)8136-5771

[Asia+Oceania]

Sumitomo (SHI) Cyclo Drive Asia Pacific Pte. Ltd. (SCA)
15 Kwong Min Road, Singapore 628718
Tel. (65)6591-7800 Fax. (65)6863-4238

[China]

Sumitomo (SHI) Cyclo Drive Shanghai, Ltd. (SCS)
11F, SMEG Plaza, No. 1386 Hongqiao Road,
Changning District, Shanghai, China (P.C. 200336)
Tel. (86)21-3462-7877 Fax. (86)21-3462-7922

[Korea]

Sumitomo (SHI) Cyclo Drive Korea, Ltd. (SCK)
Royal Bldg Room #913, 19, Saemunan-ro 5-gil,
Jongno-gu, Seoul, 03173, Korea
Tel. (82)2-730-0151 Fax. (82)2-730-0156

[Taiwan]

Tatung SM-Cyclo Co., Ltd. (TSC)
22 Chungshan N. Road 3rd., Sec. Taipei, Taiwan 104, R.O.C.
Tel. (886)2-2595-7275 Fax. (886)2-2595-5594

Our gears will continue to move the world !

Gears, bearings, screws.

These have long been called the "three major elements of machinery" and have been regarded as important.

Gears are used on a wide range of machinery including steel manufacturing and transport equipment, and have contributed significantly to the development of industry and culture.

In recent years, gears have become the focus of attention as power transmission systems have been upgraded in response to the increasing speed and size of industrial machinery.

Since its inception in 1916, Sumitomo Heavy Industries Gearbox Co., Ltd., has been the top manufacturer of gears in Japan, manufacturing international-standard high-precision gear products, and achieving great commercial success against the background of its one hundred years of tradition and accomplishment.

Our gear transmissions are used in Japan and around the world on power generation equipment, cement mills, river pumps, conveyors, cranes and other equipment supporting industry.

We have utilized the knowledge and experience gained from these successes to pursue research and development of new technology, new products, and applications that meet the requirements of gear transmissions for "compactness, weight-reduction, high efficiency and high precision."

As a member of the Sumitomo Heavy Industries Group, and originator of the Sumitomo Drive Technologies global brand in the gear transmission business, we will supply product solutions and services to meet the requirements and expectations of our customers, and aim to further evolve as a top manufacturer of power transmission systems specializing in gears and gear equipment.



President and CEO
Akihisa Miwa

| | |
|----------------|--|
| Corporate name | Sumitomo Heavy Industries Gearbox Co., Ltd. |
| Founded | September 25, 1916 |
| Capital | 840.67 million yen |
| Employees | 462 (as of September 1, 2022) |
| Head office | 4-16-1, Wakihama, Kaizuka, Osaka 597-8555, Japan Tel. (81)72-431-3021 Fax. (81)72-431-0846 |
| Sales office | Eastern region sales office 1-1, Osaki 2-chome, Shinagawa-ku, Tokyo 141-6025, Japan Tel. (81)72-431-6225 Fax. (81)72-433-3227 Western region sales office 3-33, Nakanoshima 2-chome, Kita-ku, Osaka-shi, Osaka 530-0005, Japan Tel. (81)6-7635-3662 Fax. (81)6-7711-5121 Hiroshima sales office 4-1, Inarimachi (Hiroshima Inarimachi NK Building), Minami-ku, Hiroshima 732-0827, Japan Tel. (81)82-568-0101 Fax. (81)82-262-3767 |
| Factory | Kaizuka Factory 16-1, Wakihama 4-chome, Kaizuka-shi, Osaka 597-8555, Japan Tel. (81)72-431-6225 Fax. (81)72-433-3227 Okayama Factory 8230, Tamashima-Otsushima, Kurashiki, Okayama 713-6353, Japan Tel. (81)86-525-6353 Fax. (81)86-525-6315 |
| URL | HP: https://www.shigearbox.com |



Kaizuka Factory



Okayama Factory

History of Sumitomo Heavy Industries Gearbox Co., Ltd.

- 1916 Founded as Osaka Seisasho Co., Ltd.
- 1935 Changed the corporate name to Osaka Seisa-zoki Co., Ltd.
- 1937 Acquired Mizoguchi Gear Factory to start the manufacturing of gears and transmission
- 1942 Newly established Kaizuka Factory
- 1945 Reopened Mizoguchi Gear Factory after the war
- 1946 Reopened Kaizuka Factory after the war
- 1956 Became a member of Kobe Steel group following capital investment by Kobe Steel, Ltd.
- 1970 Joined an international member of the American Gear Manufacturers Association (AGMA)
- 1982 Consolidated the head office and factory at Wakihama, Kaizuka
- 1996 Obtained "ISO9001" certification of Quality Management System Standards
- 1999 Became a member of Sumitomo Heavy Industries group following capital investment by Sumitomo Heavy Industries, Ltd.
- 2000 Made Toyo Seimitsu-zoki Co., Ltd. a special subsidiary
- 2000 Merged with Nihon Kikai Seisa Co., Ltd.
- 2000 Merge with Toyo Seimitsu-zoki Co., Ltd.
- 2002 Changed the corporate name to SEISA Gear, Ltd.
- 2006 Became wholly owned subsidiary of Sumitomo Heavy Industries, Ltd.
- 2007 Merged with Ueda Haguruma Seiki Kogyosho Co., Ltd.
- 2009 Obtained "ISO14001" certification for Environmental Management System Standard at Kaizuka Factory
- 2016 Changed the corporate name to Sumitomo Heavy Industries Gearbox Co., Ltd.
- 2017 Integrated management with the Power Transmission and Control Group Gearbox Group (Okayama Factory) of Sumitomo Heavy Industries Co., Ltd.

History of Okayama Factory

- 1970 Started manufacture of series transmission systems at Ehime Works (Niihama Factory) of Sumitomo Heavy Industries, Ltd.
- 1978 Separated reducer business and established an affiliate
- 1982 Started up the business now known as Power Transmission Control (PTC) division
- 1993 Launched PARAMAX reducers as a successor to Hansen drives
- 2000 Transferred gear box factory from Tanashi Works to Okayama Works
- 2000 Launched PARAMAX 9000 series
- 2007 Total accumulated shipments of Paramax reducers (including Hansen drives) exceed 400,000 units
- 2009 Sumitomo Heavy Industries (Tangshan), Ltd. established for manufacture of reduction gears
- 2010 Newly established base for reduction gears in Brazil
- 2011 Hansen Industrial Transmissions NV became a wholly owned subsidiary

Sumitomo Heavy Industries Gearbox Co., Ltd

| | Manufacturer | Model | Max. pitch dia. (mm) | Max. face width (mm) | Max. pitch | # of teeth Max./Min. | Max. Wt. on the table (kg) | Unit |
|--|--------------|-----------|------------------------|----------------------|------------|----------------------|----------------------------|------|
| Gear grinder for both internal and external gear | Hoefler | Rapid4000 | Ext. 4,000/Int. 4,000 | Ext. 2,000/Int.1,000 | MP40 | Arbitrary | 40,000 | 1 |
| | Hoefler | Rapid1000 | Ext. 1,000/Int. 1,000 | Ext. 1,200/Int. 450 | MP35 | Arbitrary | 8,000 | 1 |
| | Niles | ZP20 | Ext. 2,000/Int. 1,700 | Ext. 980/Int. 295 | MP30/1 | Arbitrary | 16,000 | 1 |
| | Niles | ZP12 | 1,250 | 740 | MP30/1 | Arbitrary | 10,000 | 1 |
| Gear glinder for internal | Niles | ZP20 | 1,780/220 | 295 | MP30/1 | Arbitrary | 16,000 | 1 |
| | | | Torsion $\pm 10^\circ$ | | MP1~10 | | | |
| Bevel-gear cutter | Klingelberg | AMK1602 | 2,000 | 300 | MP32 | Arbitrary | 3,000 | 1 |
| Gear measuring | Klingelberg | P300 | 3,000 | 1,200 | MP32/1 | Arbitrary | 15,000 | 1 |

Hoefler/Rapid4000



Hoefler/Rapid1000



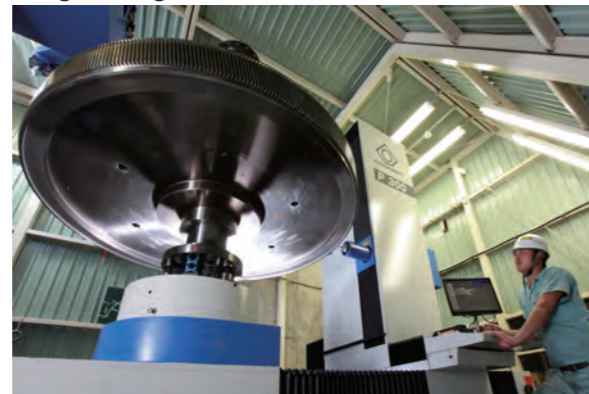
Niles/ZP20



Klingelberg/AMK1602

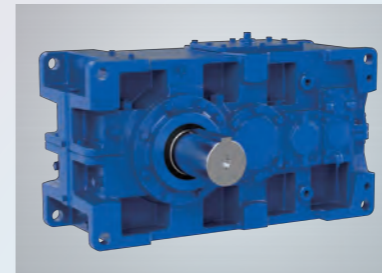


Klingelberg/P300



Moving the world with gearbox

PARAMAX® Drive 9000 Series



Compact, incorporating high strength gears
Multi-functional, high performance speed reducer
Parallel and right-angle drives
Torque rating: 2.6 - 522kN/m

Compower® Planetary Gear Drive



High torque yet radially compact
Overall length significantly reduced through our original idea and mechanism
Torque rating: 0.46 - 736kN/m

HEDCON® Worm Gear Drive



Unique double enveloping worm gearsets create a high-performance worm reducer with superior efficiency and strength.
Torque rating: 0.8 - 82kN/m

Conveying



Lifting



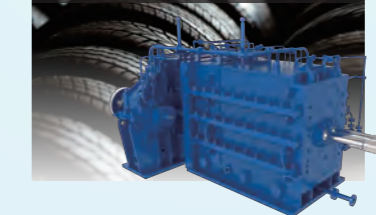
Mixing



Material crushing for cement mill



Material kneading for resin kneader



Managing water for pump



Steel making for iron manufacture



Lifeline support for generator



Good reputation coupled with reliability

DC Coupling



Oilless, non-backlash, maintenance-free

SEISA GC Coupling



Small but higher torque capacity

SF Coupling



Grid-shaped spring to absorb Shock Load

Sumitomo Drive Technologies' global network extends to countries around the world, with manufacturing plants, assembly plants and sales offices providing sales and service that meet local needs.

Our global network allows us to provide the same high-quality, high-performance transmission systems with the same high level of service to our customers around the world.

